

# CAREER OPPORTUNITIES IN HEALTH CARE AT VWCC

Medical Laboratory Technology

Joint Venture with Mountain Gateway Community College

Associate in Applied Science

2025

Pam Woody & Jasmine Terry

Yolanda Brown (540) 857-6644

Program Advisor: Rhonda Perdue ([rperdue@viriniawestern.edu](mailto:rperdue@viriniawestern.edu))

Advisor at MGCC: Anne Courtney ([acourtney@mgcc](mailto:acourtney@mgcc) or 540-863-2825)

[healthprofessions@viriniawestern.edu](mailto:healthprofessions@viriniawestern.edu)

Room 339

Application Deadline: **July 1, 2025**

(Notes listed below)

Virginia Western Community College has an Associate in Applied Science Degree in Medical Laboratory Technology.

Pam Woody & Jasmine Terry process completed academic files for applicants applying to Dental Hygiene, Nursing, Practical Nursing, Radiography, Radiation Oncology, Medical Laboratory Technician, Physical Therapist Assistant, Surgical Technology and OTA (coming fall 25, pending approval). All academic files to one of these Health Professions programs will be processed in the Health Professions Advising and Applications Office. Our office is located in Fralin Center for Science and Health Professions which is on the Virginia Western Community College campus in Roanoke, Virginia. The room number is 339 and Pam is typically in the office from Monday through Friday from 8:00-3:30. However, you may slide any application materials under the door of 339 in Fralin if the office is currently closed. Jasmine is typically in the office Monday-Friday from 11:00-2:00.

The MLT Program is a five-semester program, and we accept one time a year and classes will begin in the Fall which is usually in the mid to later part of August.

For Fall 2025, we plan to accept a Joint Venture site of Mountain Gateway cohort. There is specific information on the MLT website for the MGCC applicants to

follow. Also, the advisor at MGCC is Anne Courtney and the contact information is listed on the slide. You are encouraged to work with advisors at both sites.

We do not have a waiting list for this program. We go through an acceptance process each year to consider all applicants that have made application---in this instance from May 2024 the year prior to the **July1, 2025** deadline.

This presentation will discuss the Admissions Criteria and Process, the prerequisites for the program, the MLT Curriculum, a typical schedule for the first semester, if accepted, estimated cost of the program and some Admissions Statistics.

You may wish to review the application checklist on the MLT website itself. Again, MGCC applicants have a separate check-list for application and a separate Application Instructions link for MGCC.

The checklist, for either site, will be able to indicate any application steps necessary for you to complete to apply to the program. You may also contact Ms. Yolanda Brown for general application information regarding the process and verification of the complete academic file prior to receipt of the advising letter. You may contact one of the team-members in the Health Professions Advising and Applications Office. You may also contact Ms. Rhonda Perdue, another advisor for MLT, at VWCC [rperdue@viriniawestern.edu](mailto:rperdue@viriniawestern.edu) for course mapping.

# PROFESSIONAL EDUCATION

- Academically Challenging
- Science orientation
- Classroom and Clinical components
- Skills application

The MLT program is academically challenging in regards to it is a very intense science-based program.

It does have a strong science orientation due to the nature of science involved in the profession.

The program does consist of classroom and clinical components. At VWCC, we have an on-campus lab to help facilitate learning and students also go into the clinical sites.

The students at Mountain Gateway will have lab space and clinical site in the Mountain Gateway area (ie Alleghany Regional Hospital). MGCC students will also need to plan to come to Roanoke area for certain clinical objectives during the course of the program.

## WHAT IS MLT?

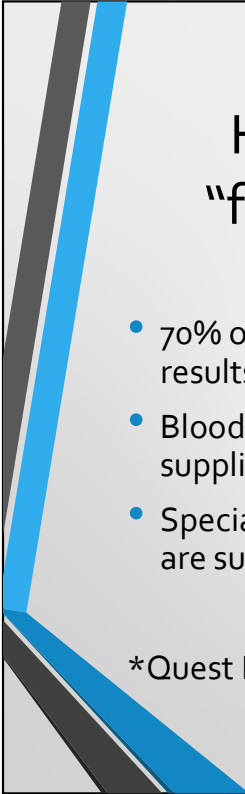
- MLT is Medical Laboratory Technology.
- MLTs test blood, urine or tissue samples, prepare specimens, analyze fluid chemical content, match blood compatibility for transfusing and complete many other types of diagnostic duties
- MLTs are essential in determining a patient's diagnosis, helping patients manage diseases and therapy and screening for specific conditions.

MLT graduates work in the lab of hospitals.

## What Job Duties do MLT perform

### **Job duties of MLTs include:**

- Examining blood for hematological disorders/diseases
- Identifying bacteria and viruses that cause disease
- Supplying compatible blood for patients who need transfusions
- Performing clinical chemistry tests that allow physicians to diagnose a variety of organ specific diseases



## How Does the role of a MLT “fit” into the Healthcare team

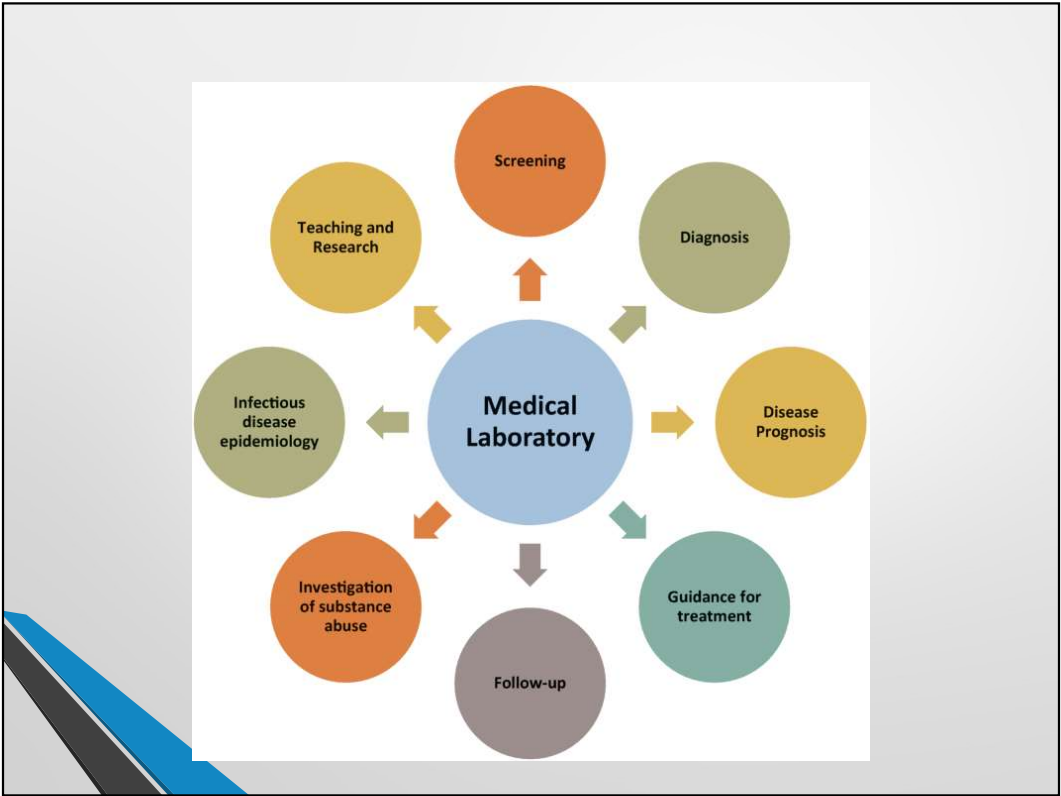
- 70% of physicians’ diagnoses are based on laboratory results\*
- Blood for trauma patients and surgical procedures are supplied by the medical laboratory
- Special blood products for pediatric and cancer patients are supplied by the clinical laboratory

\*Quest Diagnosis

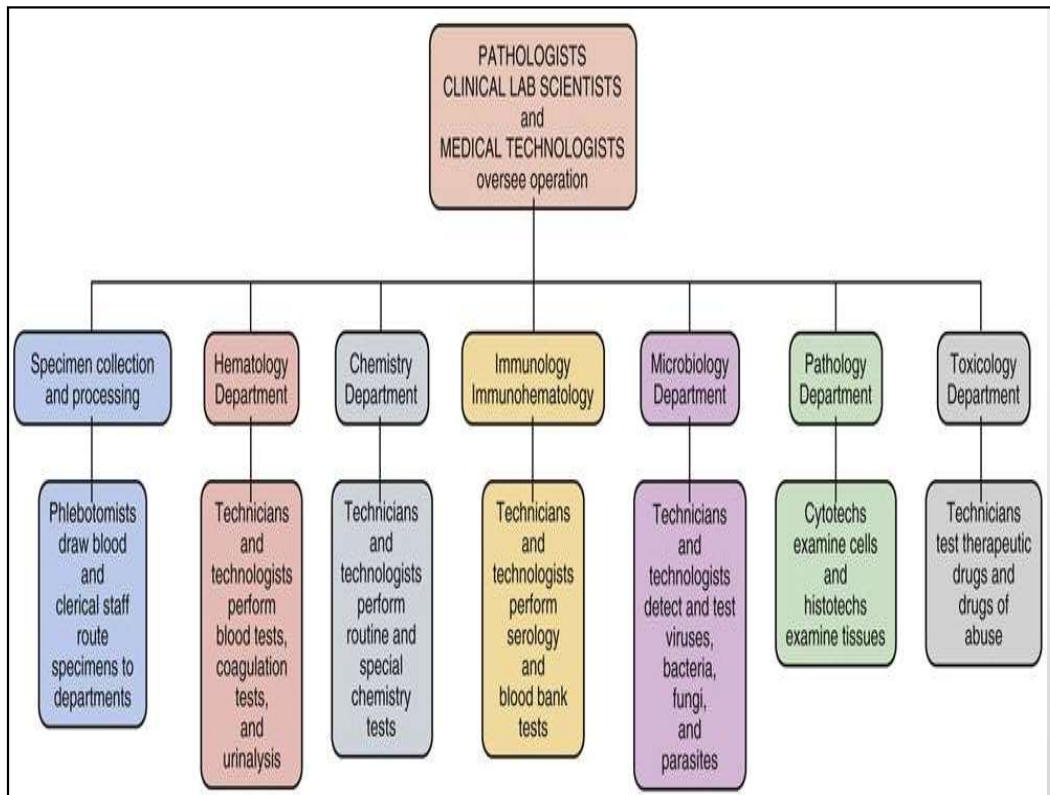
Certified MLT graduates can work in hospital blood bank, hematology, clinical chemistry, clinical microbiology, urinalysis, and coagulation

## What jobs do MLT do and where do they work

- Graduates of the program work in a lab setting and must pay attention to detail and have strong dexterity
- MLTs can also test donor blood at the American Red Cross
- MLTs can work in physician's office labs and urgent care labs
- MLTs primarily work in hospital settings where they can specialize in a particular area of the lab or be a generalist







- Phlebotomy- Collection of Samples (blood, urine, other), GTT -glucose tolerance test, Sweat test
- Chemistry- Electrolytes (Na, K, Cl, etc.), Glucose, Enzymes, Albumin, Lipids, Hormones, Tumor Markers, Therapeutic Drug Levels
- Hematology- CBC, WBC Differential, Coagulation Studies, Body fluid cell counts ie CSF
- Immunology- Antibody/ Antigen testing (ie COVID, MMR, EBV), Autoimmune, Immunodeficiency, Antibody titers
- Immunohematology- ABO/Rh, Antibody Screen, Crossmatch, DAT, Cord Blood testing
- Microbiology- Gram stain, Culture and sensitivity, O&P, Fungal tests
- Urinalysis / Body Fluids- Urinalysis (random or 24-hour), Osmolarity, CSF, Serous, Amniotic, etc.
- Toxicology- Drugs, Poisons, Heavy metals
- Histology/ Cytology- preparation of slides for pathologic review, PAP smear analysis, assists with autopsy/ gross tissue from surgery
- Pathology- Tissue analysis using various staining techniques, Autopsies, Lab Test interpretation

# MLT ADMISSION CRITERIA

## REQUIRED:

- High School Diploma/GED
- College-level English –completed at “C” level or above— completed by **end of Spring prior to fall admission.**
- Two credit of SDV 101-Orientation to Health Professions-- completed by **end of Spring prior to fall admission.**
- **High School/College GPA 2.0 or above by end of Fall semester prior to spring deadline.** (If using college GPA must have at least 12 credit hours of college credit in 12 month timeframe to use GPA.)

In order to be considered for the MLT program, you must be either a HS Graduate or have obtained a GED.

College level ENG 111 completed by end of spring prior to fall admission. (Prerequisite to ENG is Direct Enrollment into ENG 111/EDE 11 or completion of any necessary developmental English course.

SDV 101-two credits—Orientation to Health Professions, which is designated with a “P” on the course listing. Please note that if you have obtained a Bachelor’s Degree (in the United States or provided documentation from an organization that indicates the equivalent of such in your country), we can waive the two credits of SDV 101 and award the two credits of SDV based on completion of the Bachelor’s Degree (or Associate Degree).

Please note that MGCC offers a one-credit SDV course. That is required for their prerequisite. During the program, they complete a HLT 100-two credit CPR that will certify MGCC students in the required CPR for clinical and the second credit of SDV will be used to fulfill the second credit of SDV 101 at VWCC.

The GPA is calculated at end of Fall prior to the May 1 deadline. College GPA must be based on at least 12 credit hours of college credit in 12-month timeframe.

We look at the academic history from HS to most recent with an emphasis being placed on the most recent academic accomplishments.

If you perform poorly in High School and come and complete 22 college credits with a cumulative 3.6, this is a good scenario.

If you perform poorly in High School and come and complete 22 college credit with a cumulative GPA of 1.7, you will not qualify for consideration based on GPA criteria.

If you perform poorly in HS, you will need 12 credit hours of college credit by end of Fall semester for us to use your college level GPA

You may wish to visit the website with the checklist for application at :  
<https://www.viriniawestern.edu/academics/health-professions/med-lab-technology/> that outlines the application process for admission. Look under “MLT Forms”

Please note that changes can be made to pre-requisites for 2025. Please pay attention to college website.

## MLT ADMISSION PROCEDURES

- Apply to VWCC and indicate program of study as Career Studies Certificate: Introduction to MLT and curricular.
- If MGCC applicant, see note above and **also apply** to MGCC and select the plan of Advanced Health Care Certificate
- Apply to MLT Program-complete the application (MGCC applicants must submit the program application to Pam Woody at VWCC)
- Submit official transcripts from HS and copy of GED scores and **all** colleges attempted to the Health Profession Advising and Applications Office. Information needs to arrive in one envelope. (Exception: VCCS transcripts are not required as we can access information on system.) Mail official transcripts to School of Health Professions, VWCC, Attn: Pam Woody, 3091 Colonial Ave. SW, Roanoke, VA 24015.
- The Advising letter is scanned to student email or to the email provided on the MLT application usually within three-six weeks of completed academic file. (Exception: high-volume time periods like registration and just prior to HP deadlines).
- Meet with one of the Health Professions Team Members to discuss concerns or questions after receipt of advising letter if necessary

Complete the VWCC application and indicate you are interested in Career Studies Certificate (CSC): Introduction MLT. This also allows for the Admissions Office to “match” transcripts that may arrive at the Admissions Office with your academic file. MGCC applicants must apply to VWCC as the first step as well. When MGCC students apply at MGCC, they need to select their plan of study as Advanced Health Care Certificate. Also, remember MGCC applicants, you need to apply to VWCC as a first step and select CSC: Introduction to MLT as your plan of study.

Complete the MLT Program Application and return to the Health Professions Advising and Applications Office. (Form is available from HPAAO and the HP MLT website.) Please remember to list all colleges attempted on the MLT application. You may attach another sheet of paper, to the MLT application. with additional college information if necessary.

All application materials: program application and official transcripts from High School and all non-VCCS colleges attempted, must be sent to Pam Woody at VWCC (3091 Colonial Ave., Roanoke, VA 24015)

It is YOUR responsibility to request and determine if your file is complete by the deadline. We need OFFICIAL transcripts from ALL colleges attended/attempted (except other Virginia Community Colleges). We also need official High School even if you have an advanced degree and we'll need High School if attended thru 9<sup>th</sup>

grade and completed a GED. We will need a copy of your GED scores. All items must arrive by the application deadline of **July 1**.

## **WE DO ENCOURAGE EARLY APPLICATION TO ASSIST WITH COURSE MAPPING AND COURSE COMPLETION.**

It is important that the information is addressed to the School of Health Profession Advising and Applications Office (not the Admissions, Records or Enrollment Offices as this delays the process).

Once evaluated, applicants are sent, via email, an “advising letter” informing you about prerequisites and career support classes. **VERY IMPORTANT—IF YOU HAVE NOT RECEIVED THIS LETTER-YOU WILL NOT BE CONSIDERED.** Usually there is a three to six week turn around time from receipt of complete academic file to process your file and complete the Advising letter. Please be aware that during high volume times such as registration and deadlines and the Spring semester as this will delay the processing of your file. Deadlines range from February to April for all Health Profession programs. You can expect delays during this time. The advising letter will be mailed upon completion of academic file and it will inform you of your prerequisites you have completed, the grade you rec'd in those classes, your cumulative GPA at point of application, and any college courses previously completed or currently enrolled in that can be used in MLT curriculum. In addition, after acceptance in May and through July, there could be a delay in the advising letter due to orientations and etc. over the summer months.

Deadline is **July 1**.

It is in your best interest to **apply early** so we can advise course selection for Spring semester and etc. Even if you lack some of the prerequisites, we update your record in January to reflect courses completed in Fall and your cumulative GPA at the end of Fall and which courses you are enrolled in for Spring. If you apply from July to December and you are currently enrolled in a non-Virginia Community College, you will need to provide us updated transcripts reflecting your final grades in the Fall semester. Keep in mind that this updated transcript must arrive by **JULY 1**.

For those ineligible to continue in the process you will receive a letter in May/June that will indicate why you are ineligible. Reasons for ineligibility may include missing items like updated college transcripts, or missing pre-requisites, or cumulative GPA is below the 2.0.

## MLT STUDENT RESPONSIBILITIES-DURING APPLICATION PROCESS

- Notify the Office of Health Professions Advising and Applications and Office (healthprofessions@viriniawestern.edu) of any changes in your address, name, and phone number after application. This must be done in writing in a note that includes Student ID.
- Review the Essential Functions of the MLT Program. This listing is available on the website for MLT.
- Contact Dr. Jeffrey Gillette if you have a felony or misdemeanor conviction as you may be ineligible to take the licensing examination

Anytime you move or change your name during the application process, you need to inform the Health Professions Advising and Applications Office (healthprofessions@viriniawestern.edu). We use a separate database than the college and if you inform Admissions, we will not know of the changes and we need to maintain contact with you in regard to the next step in the application process. We will need changes in writing with an identification number such as your student id and if your name changes, we will also need a copy of your marriage license or your driver's license that reflects the name change.

You need to review the Essential Functions which are available from the website to make sure that you are able to perform these functions or if we can make reasonable accommodations for any disability.

If you have been convicted of a Felony or misdemeanor, you need to contact the Program Head, Dr. Jeff Gillette (jgillette@viriniawestern.edu or 540-857-6293) to discuss your individual circumstance, as you may be ineligible to set for the Board, upon completion of the program. In addition, you may not pass the background & urine drug screening that is required of all HP students in relation to our contract with our clinical sites. If you do not receive a clear criminal background check or negative drug screening the clinical sites may not allow you to go for clinical and therefore, you will be unable to fulfill your clinical requirements for the program.

## MLT STUDENT RESPONSIBILITIES- if accepted

- Attend MLT Orientation
- Admission contingent upon receipt of satisfactory medical examination, CPR certification, negative drug screening and clear criminal background check
- Maintain a "C" average in MDL and clinical course and the support (non-MDL) classes in the curriculum

Your Admission is contingent upon satisfactory receipt of medical examination, the required CPR certification, clear criminal background check and a negative urine drug screening. The forms and the amounts of the above and other cost associated with the beginning of the program will be discussed at orientation that is held in mid-July once we have selected our class and they have accepted their positions. CPR is generally provided by VWCC during the summer semester. (HLT 105 and 106 at VWCC can both be completed to satisfy the CPR requirement.) You will need to wait to obtain your CPR as a specific type is required. You will be notified at orientation the type that is required and the offerings that VWCC will be having (if any) during the summer prior to the beginning of Fall semester. Please note, the CPR requirement is scheduled for the last spring semester, just prior to your internship. MGCC students, you will need to plan to complete the HLT 100-two credits that is part of your program at MGCC. The second credit of HLT 100 will be used for the second credit of SDV. The first credit of HLT 100 will satisfy the HLT 105 requirement as part of your plan of study.

In addition, your responsibilities include maintaining at least a "C" average in all of your MDL courses and the support classes of non-MDL prefix courses (like MTH 155, PHI 220 etc.)



## MLT STUDENT RESPONSIBILITIES-con't

- Be prepared to attend classes/clinicals on day or evenings
- Purchase lab supplies, uniforms, and accessories as directed
- Provide transportation to and from agencies

Your orientation will include information in regard to the supplies, uniforms, and monies that are required to begin the program. Classes and clinical for MLT are generally held during the day. Clinicals for the program will begin in the spring of second year.

Of course, providing transportation to and from the college and our clinical sites are your responsibility.

MGCC students will have clinical in the Alleghany region but will also need to plan to travel to Roanoke to complete some of the clinical outcomes for the program, that is not available at the Alleghany Hospital site.

## CREDENTIALS FOR PRACTICE AS A MLT

- Graduate of an accredited program (VWCC's MLT program is accredited by NAACLS)
- Successful completion of the MLT(ASCP) Board Exam

I have included the credentials necessary for practice in this slide. As a matter of note, the average pass rate for the VWCC MLT graduate on the MLT(ASCP) exam is generally higher than the national average.

## PRE-PREREQUISITE COURSES- MLT

EDE 10 or EDE 11. If you are a recent High School graduate (within the last five years) here are the guidelines for placement into ENG 111.

- HS GPA < 2.0= EDE 10
- HS GPA 2.0-2.99= EDE 11 + ENG 111
- HS GPA = 3.0+ = ENG 111

If you have graduated over six years from High School, then Informed self-placement will place you in the recommended ENG or EDE courses.

Depending on your academic history it may be necessary for you to take certain English preparatory courses. Joint Venture applicants, please work closely with the Counseling Office, at your college, to determine the appropriate English course that is needed, if not previously completed. VWCC applicants will need to work with New Student Advisor in assessing the need for discussion regarding your course sequencing. Sometimes it is necessary to complete the English writing sequence of a non-credit English to assist you with some skills and then move to other courses offered at the college.

Readiness for ENG 111/EDE 11 is required before BIO 101, PSY 230 and other courses requiring reading. For instance, if you need to register for EDE 11 and ENG 111 and plan to complete BIO 101, you will need to either be enrolled in the EDE 11 and ENG 111 as well as BIO 101 or complete the sequence of EDE 11 and ENG 111 prior to enrolling

## PREREQUISITE COURSES MLT

- ENG 111—English Composition
- SDV 101-Orientation to Health Professions-  
two credits

MGCC only offers a one credit SDV currently. Please note that Mountain Gateway students may take the HLT 100 and we can use the second credit of HLT 100 for one credit of SDV. (Must complete the one credit of SDV at Mountain Gateway as well to satisfy the two credit SDV prerequisite requirement.) In addition, we can use HLT 143 from Mountain Gateway for the second credit of SDV as well. We can also use the credit from PED 116 at MGCC for the second credit of SDV 101 prerequisite.

In addition, if you have obtained an Associate Degree or higher, we can award credit for prior learning for the two credit SDV.

Please reach out to [healthprofessions@viriniawestern.edu](mailto:healthprofessions@viriniawestern.edu) for assistance, or Ms. Rhonda Perdue ([rperdue@viriniawestern.edu](mailto:rperdue@viriniawestern.edu)) or MGCC applicants can also reach out to Ms. Anna Courtney, [acourtney@mgcc.edu](mailto:acourtney@mgcc.edu) or 540-863-2825 for assistance with courses at MGCC.

## PREREQUISITE COURSES-MLT- con't

- Prerequisite courses need to be completed by the end of Spring prior to fall admission to qualify for fall MLT Program.
- GPA must also be equal to or above a 2.0 by end of Spring prior to July deadline (if using college GPA, must be based on at least 12 credit hours of college credit within 12-month timeframe).

## CAREER SUPPORT CLASS INFORMATION-MLT

- Career support classes may be completed prior to entering the MLT Program. Note: BIO 252/251 can be completed prior to admission but will be self-pay as courses are not in the CSC: Intro to MLT
- Career support classes are classes in the curriculum without the “MLT” prefix in the class.
- Completion of classes does not guarantee a position in the program.
- Course do have to be completed with a grade of “C” or higher

In addition to the pre-requisites there are career support classes that can be completed prior to entering the MLT program.

Career support classes are classes within the curriculum that do not have the “MLT” prefix. This would include courses for instance like Math 155, CHM 101, PSY 230, PHI 220-Ethics. These will be listed on a following slide.

You are encouraged to complete some of the support classes prior to entering the program but it is not mandatory that you do so. Most of the applicants have completed some, if not all of the support classes. However, keep in mind that completion of the support classes do not guarantee you Admission into the program. If you are accepted into the MLT program without completing the support classes, you will take the curriculum as outlined in a following slide.

## CAREER SUPPORT CLASS INFORMATION-continued

- Advantages to completing career support classes prior to entering program:
  - Helps establish a college GPA with science courses
  - If accepted, allows student to spend more time on “core” classes
  - Student has been exposed to material prior to MLT lectures.

There are several advantages to completing the support classes prior to entering the program. One of them would be it would allow you as a student, if you were to be accepted into the program, to spend more time on your core MLT classes.

Another advantage to completing career support classes prior to entering is the time-frame for you to associate previous learning with current learning. Studies have shown the more times a student is exposed to material and the student’s ability to associate and relate previously learning---it assist with retention and recall of information.

Once again, you are encouraged, if possible, to complete some of the support classes prior to entry. However, it is not mandatory, and we do have students who enter the program w/o completing the support courses prior to entry and they are successful. Just remember it is an intense two-year program.

<b>MLT- CURRICULUM</b>		
<b>Fall-1<sup>st</sup> year</b>	<b>Spring</b>	
CHM 101	MDL 125	
MTH 155	MDL 126	
MDL 101	MDL 260	
MDL 215	PSY 230	
MDL 140	PHI 220	
<b>Fall-2<sup>nd</sup> year</b>	<b>Spring</b>	<b>Summer</b>
MDL 225	MDL 236	MDL 290
MDL 227	MDL 237	MDL 195
MDL 261	MDL 262	
BIO 252 (B 141)	BIO 251 (B 142)	
	HLT 105	

### **Fall**

CHM 101-Introductory Chemistry—students must be ready prerequisite wise to complete the CHM 101 at both sites (VW and MGCC)

MTH 155-Statistical Reasoning

MDL 101-Introduction to Medical Laboratory Techniques

MDL 215-Immunology

MDL 140-Clinical Urinalysis

### **Spring**

MDL 125-Clinical Hematology

MDL 126-Immuonohematology I

MDL 260-Lab Instrumentation

PSY 230-Developmental Psychology

PHI 220-Ethics

### **Fall**

MDL 225-Clinical Hematology II

MDL 227-Clinical Immunohematology II



### MDL 261-Clinical Chemistry & Instrumentation

BIO 252-Nucleic Acid Methods or at MGCC BIO 141-Anatomy and Physiology I—students at VWCC, need to be sure they have successfully completed the BIO 101/NAS 2 within three years of the BIO 252. MGCC students will need to plan on completing the BIO 141 as the BIO 252 is not taught at MGCC. A recent Biology/NAS 2 is a prerequisite for the BIO 141 at MGCC. VWCC students can complete the BIO 141 as well, instead of the BIO 252, but should discuss both options with the Program Head, Dr. Gillette on the pros/cons of BIO 252 vs BIO 141 in the profession.

### **Spring**

MDL 236-Parasitology and Virology

MDL 237-Clinical Bacteriology

MDL262-Clinical Chemistry & Instrumentation II

HLT 105-CPr

BIO 251-Protein Applications in Biotech or BIO 142 at MGCC. See note above for BIO 252/BIO 141.

MDL 290 may also be offered in both spring and summer semesters to allow for additional clinical hours.

### **Summer**

MDL 290-Coordinated Internship in MLT

MDL 195-Topics in Medical Laboratory Tech.

## SUPPORT CLASSES-con't

Generally offered every semester

- CHM 101-Introduction to Chemistry
- MTH 155-Statistics
- BIO 252-Nucleic Acid-4 credits
- BIO 251 Proteins- 4 credit
- HLT 105-1 credit
- PHI 220
- PSY 230

CHM 101-Introduction to Chemistry. Prerequisite for CHM 101 is successful completion of math units 1-5 or successful completion of MDE 10 or Direct Placement into college level math within the last five years.

MTH 155-Statistics—no other math can sub for MTH 155 except MTH 245. Prerequisite for MTH 155 is successful completion of math units 1-5 or successful completion of MDE 10 or Direct Placement into college level math within the last five years or placement into MTH 155 + MTH 55

BIO 252-Nucleic Acid—prerequisite is recent Biology or NAS 2 with grade of “c” or higher or grade of “s” within the last three years. Prerequisite for BIO 101 or NAS 2 is successful completion of MDE 10 or Direct Enrollment into college level math within the last five years.

BIO 251-Proteins-prerequisite is recent Biology or NAS 2 with grade of “c” or higher or grade of “s” within the last three years. Prerequisite for BIO 101 or NAS 2 is successful completion of math units 1-5 or successful completion of MDE 10 or Direct Enrollment into college level math within in the last five years.

HLT105-1 credit can be obtained by completing HLT 105 and this will allow you to be certified in Health Care Provider CPR. If you are certified in the required CPR, American Heart Association BLS Adult, Child and Infant with AED training, we will be able to use a copy of your CPR card to equate to this one credit course. Therefore, you will not need to complete the HLT 105 credit. CPR card must remain valid for entire program duration. However, MGCC applicants, need to be aware that they will need a second credit of a HLT or PED course to complete the second credit of SDV. Medical Terminology, for instance, can be used to fulfill the second credit of SDV if you have the CPR certification through the community or work. However, keep in mind that Financial Aid may not cover the cost of HLT 143 since it is not “technically” part of the curriculum. Work with Ann Courtney at MGCC for assistance in navigating the SDV and HLT components of the program.

PHI 220-Ethics

PSY 230 Developmental Psychology

## TYPICAL SCHEDULE FOR MLT CLASSES

- MLT classes for any semester are usually M-F from 8:00 or 9:00 AM to 5:00 PM. Days with laboratory classes will be longer than those with no laboratory classes.

Typical schedule for first semester—can always change.

Once again this is a typical schedule to give you an idea of when your classes will be for the first semester

Sometime there is a need to have an evening clinical and what you see here is a typical schedule only. The schedule can vary as deemed necessary from one fall to another.

If you are accepted into the Fall program, you will receive your fall schedule at orientation in July.

## TIME LINE OF APPLICATION/ADMISSION

- Apply by **July 1 prior to fall admission** with complete file {VWCC application MLT program application, GED/HS official transcripts, official college transcripts (except VCCS transcripts)} –we do encourage early application so advising can be more meaningful and course mapping can occur
- **Once academic file is complete**—should receive an ADVISING letter from Health Profession Advisors
- Wait for acceptance/alternate/denial status in program-usually in late May.
- Program begins in August of each year, if accepted

The process of application---once again the deadline is May 1 and all items must be at VWCC on or before that date.

The process includes completing a VWCC application and indicating Intro to MLT as your program of interest. MGCC must apply to VWCC and follow the guidelines listed above. In addition, MGCC students must apply to MGCC and select the plan of study as Advanced Health Care Certificate. (advisor is Ann Courtney [acourtney@mgcc.edu](mailto:acourtney@mgcc.edu))

Also, need to complete the program application, and submit official High School transcripts, a copy of your GED scores, if applicable to Pam Woody at VWCC. Remember if you obtained a GED and completed at least through 9<sup>th</sup> grade of High School, we will need both the GED scores and an official HS transcript. We also need official HS transcripts if you have obtained advanced degrees. We need official transcripts from all colleges attempted, except VWCC and other Virginia Community Colleges. It is best for the above to arrive in one envelope to the HPIO.

We do encourage you **to apply early** to the program, not because priority is given—because none is given for early application—but it allows us a chance to review your academic file and offer course suggestions.

Once your academic file is complete, you'll receive the Advising letter that I have previously mentioned. The Advising Letter will verify your pre-requisites, your cumulative GPA at point of application, and college courses, if applicable, that can be utilized in the MLT curriculum. If you've applied from July, after July 1 deadline-December prior to MAY deadline of following year---we will update your records in June in regard to courses completed in the Fall semester and what your cumulative GPA is after the Fall semester and what courses you are currently enrolled in for the Spring semester. At the end of the spring semester, we will verify that your GPA is above a 2.0 and you have completed any missing prerequisites during Spring, we'll send you a letter regarding the next step in the process. If your GPA is below 2.0 or you are missing prerequisites for Spring, we'll send you a letter in May informing you of your ineligibility to be considered for the program and indicate the reason.

If you applied between July and January , we will need updated transcripts showing completion of the Fall semester with grades posted if you have been attending a non-VCCS.

After everyone who is eligible, the Admissions Committee will meet to select the students coming into the program. You will receive a letter informing you of our status into the program—typically in May.

## TIME LINE OF APPLICATION/ADMISSION

- If accepted, return acceptance form to confirm your class position for fall
- If on alternate list, return alternate acceptance form
- Will receive orientation information which includes the following information regarding: obtaining your criminal background check and submitting your urine for the drug screening, CPR information, uniform ordering information and etc. This typically occurs in June.
- Program begins in August, if accepted.

All applicants will receive a letter of either acceptance, placed on alternate list or a not quite this year, as long as they completed the application process, with the last steps being the interview and essay/interview questions.

If you are accepted into the program, you'll need to return the acceptance forms to HPAAO and plan to attend your orientation typically held in June. If you are placed on the alternate list, you'll need to return the alternate acceptance form. If someone we've accepted into the program, declines their position, then we go to the prioritize alternate list and offer the next person a seat in the upcoming class.

All applicants completing the application process will receive a letter informing them of their status in the program in late May as we need to wait for spring prerequisite course grades to post, if enrolled.

If you are accepted into the program, usually in mid-July, you'll receive the orientation date for late July. The orientation will include information regarding how to obtain your criminal background check, the appropriate type of CPR required and information regarding fees due at orientation and where to obtain your uniforms and etc. Typically the Joint Venture students come to the VWCC campus for orientation.

## ESTIMATED COST OF MLT PROGRAM

- Tuition based on 71 credit hours at \$179.99 per credit hour for in-state students (\$12,779.29 and you are encouraged to check the VWCC website for updated tuition rates.)
- Books (for MLT only)-\$800.00
- Program Fees-\$400.00
- Physical/CPR/Hepatitis B/Background check-\$460.00
- Uniforms/Shoes-\$200.00

Once accepted, we'll provide you with a contact person in the Financial Aid office for scholarships for allied health persons that could be possibly beginning in the fall or sometimes begin in spring. In addition, typically one person from FA will be the contact person for working with Joint Venture students. (We have two other programs that offer Joint Venture programs with NoVA, DCC and Laurel Ridge CC.) Joint Venture students need to complete a Consortium agreement and details will be forthcoming for accepted students either during or prior to orientation.

The estimated book cost is for the MLT books only. Other general education courses like PHI 220 and PSY and etc. will be an additional book cost.



## Work Environment

- Will be working in a laboratory setting with little patient contact.
- You will be working closely with other members of the health care team such as doctors and nurses, and you will be working closely with other members of the laboratory team.

## TYPES of Jobs with MLT

- Hospital Laboratories
- Doctor's Offices and urgent care facilities
- American Red Cross
- Quest Laboratories (national)
- LabCorp (national)
- Medical Instrument Companies (Siemens, Beckman-Coulter)
- Laboratory Software companies

## REQUIREMENTS FOR REAPPLICATION

- Submit application for the next year and increase academics/professional knowledge to be more competitive and perform well on entrance examination
- You will need to go through application process again. Complete entrance examination, interview with Program Director, and interview with Radiography Faculty and this process will begin in February
- Submit updated transcripts after each semester (non-VWCC students or VCCS students) and send to my attention at the VWCC address.
- Remember to review the website to determine if any changes have occurred to the application process, pre-requisites, curriculum or etc..

If you applied to the fall program and you were not accepted, you are encouraged to reapply to the following fall program. To do this you would need to submit a new MLT program application, we would not need transcripts that you have already submitted, except for updated one if applicable. You would also need to submit a new application for new fall program and you could increase your chances by strengthening your academics and knowledge of the profession, if you felt that was an area that was lacking. You will repeat the application process, of going through the testing and interview process with the Program Director and faculty members. Keep reviewing the website for any changes in the process, pre-requisites, curriculum and etc. You are welcome to contact the Program Director, Dr. Gillette, for notes from areas of weakness on the admission rubric and techniques to improve upon.

## Informational Material

- You may access the following website for Application materials including the Application, Transcript Request Form and other information regarding the application process including Questions and Answers regarding the program:

<https://www.viriniawestern.edu/academics/health-professions/med-lab-technology/>

Email questions/concerns/feedback to [healthprofessions@viriniawestern.edu](mailto:healthprofessions@viriniawestern.edu).

There will be a "Best Practices" for application to Restricted Health Professions Programs, the first Frida of every month (except July) at 1:00 in HP 210

Our information packet, includes the information previously mentioned, questions and answers about our program, the transcript request form, and other information can be accessed at this website, if you are unable to access this information or to download this information, you are welcome to contact our office.

If you would like to provide feedback regarding this presentation, please contact the Health Professions Advising and Applications Office using the email address listed here.