



VIRGINIA WESTERN COMMUNITY COLLEGE

The Workforce Development Services/Lifelong Learning Division offers a wide variety of credit and non-credit business, industrial, trades, human resource, health technology, and computer courses to fill the needs of most companies and government agencies.

Our programs can be conducted on-site or at any of the four Virginia Western sites in

Roanoke (2 sites)
Daleville
Rocky Mount

*Opportunities for a
Lifetime of Learning*

*An Equal Opportunity/Affirmative Action
Institution*

TTY: (800) 855-2880 all users:711



Visit us on the web at
[http://
learnconnect.viriniawestern.edu/](http://learnconnect.viriniawestern.edu/)

VIRGINIA WESTERN COMMUNITY COLLEGE

American Sign Language for Educators (Approved For Content)

*Workforce
Development
Services*

At

*The Franklin Center
Rocky Mount
483-0179*

American Sign Language
for Educators—Boot Camp
is offered for the
Summer 09 semester

Boot Camp Dates
7/28, 29, 30, 8/04, 05
8:00 AM—5:00 PM



It's your move...



COURSE CONTENT

AMERICAN SIGN LANGUAGE I (3-Credit) (Approved For Content)

Introduces the fundamentals of American Sign Language (ASL) used by the Deaf Community, including basic vocabulary, syntax, finger-spelling, and grammatical non-manual signals

Focuses on communicative competence

Develops gestural skills as a foundation for ASL enhancement

Introduces cultural knowledge and increases understanding of the Deaf Community

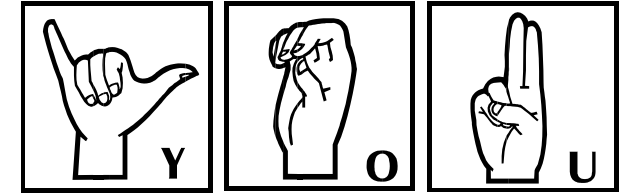
Boot Camp Dates

7/28, 29, 30, 8/04, 05

8:00 AM – 5:00 PM

Tuition: \$266.22

Free books for the first 10 students to register. This is a \$59.95 value, sponsored by the VWCC Educational Foundation.



Can be a part of this program too...
**Registration begins
April 20, 2009**

**VWCC
Workforce Development &
Lifelong Learning Services**

**Designed to help busy people
meet their job requirements.**

**Classes can be taken in a
traditional face-to-face
setting**

On-Site Training

Customized Courses



For registration and additional information, please contact the
**Virginia Western
Workforce Development Office
at
The Franklin Center
50 Claiborne Avenue
Rocky Mount, VA
(Behind the Library)**

**540-483-0179
ext. 2116 or ext. 2117
or by email**

mgreer@viriniawestern.edu
alayne@viriniawestern.edu